



Integration, Reporting & Management for Fire & Security Systems

If you are an Organisation that operates multiple buildings often with a variety of alarm systems that vary in age and manufacturer, TFSNET® is an ideal product for the centralisation and management of these systems.

INTRODUCTION

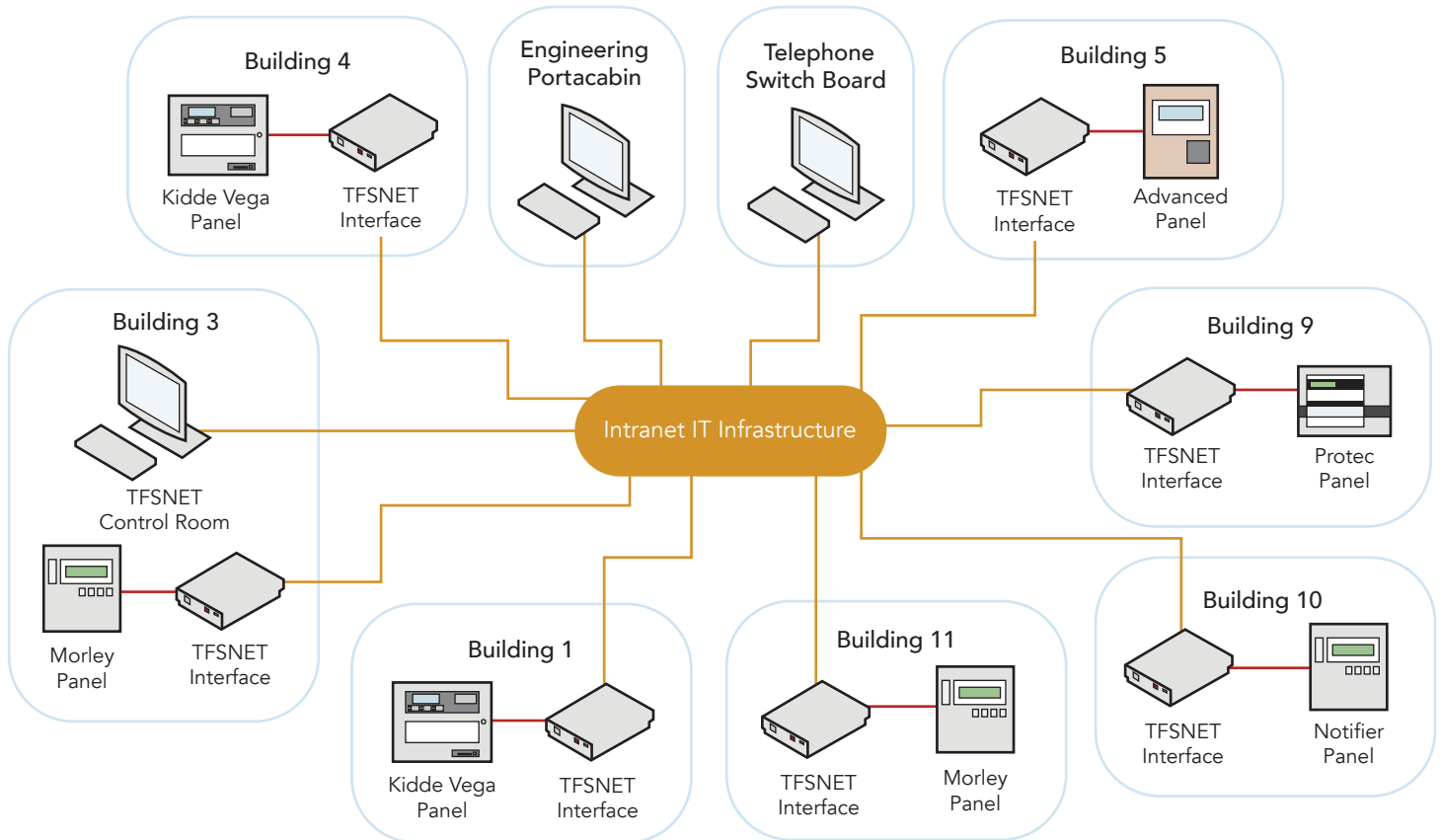
TFSNET® is a critical alarm reporting and management system for Fire & Security Systems, generally used on large sites which have multiple systems and control panels. The system is capable of bringing together equipment from various manufacturers whilst giving the user the advantage of viewing and controlling all the systems in the same format.

TFSNET® can report and be managed from multiple locations, important reports can be generated and system logs can be kept. Furthermore, the system can utilise the existing building infrastructure networks including Ethernet TCP/IP as well as proprietary networks via traditional RS485 cable methods, fibre optics or telephonic (PABX, PSTN, ISDN or ASDL). Remote buildings can also be linked via GSM networks.

KEY BENEFITS



- Seamless Integration of multiple system manufacturers (see list)
- Kidde Vega and Legacy Systems can be connected
- Uses Existing Infrastructure or IT Infrastructure
- Single or Multi Site Capability
- User Defined Visual & Audible Alarms
- User Configurable Screen Layouts
- Windows operating platform
- TCP/IP Connectivity
- Multiple Workstations
- On-Screen system status display
- Management Reporting
- History Search
- High Level Integrity and redundancy
- Integration and interaction between external systems
- User profiles to suite operator responsibility, password protected.



TFSNET® is different from other integrated systems as it is specifically designed for Life Safety Systems and Critical Event Monitoring where failure is not an option.

APPLICATIONS

Typical Applications

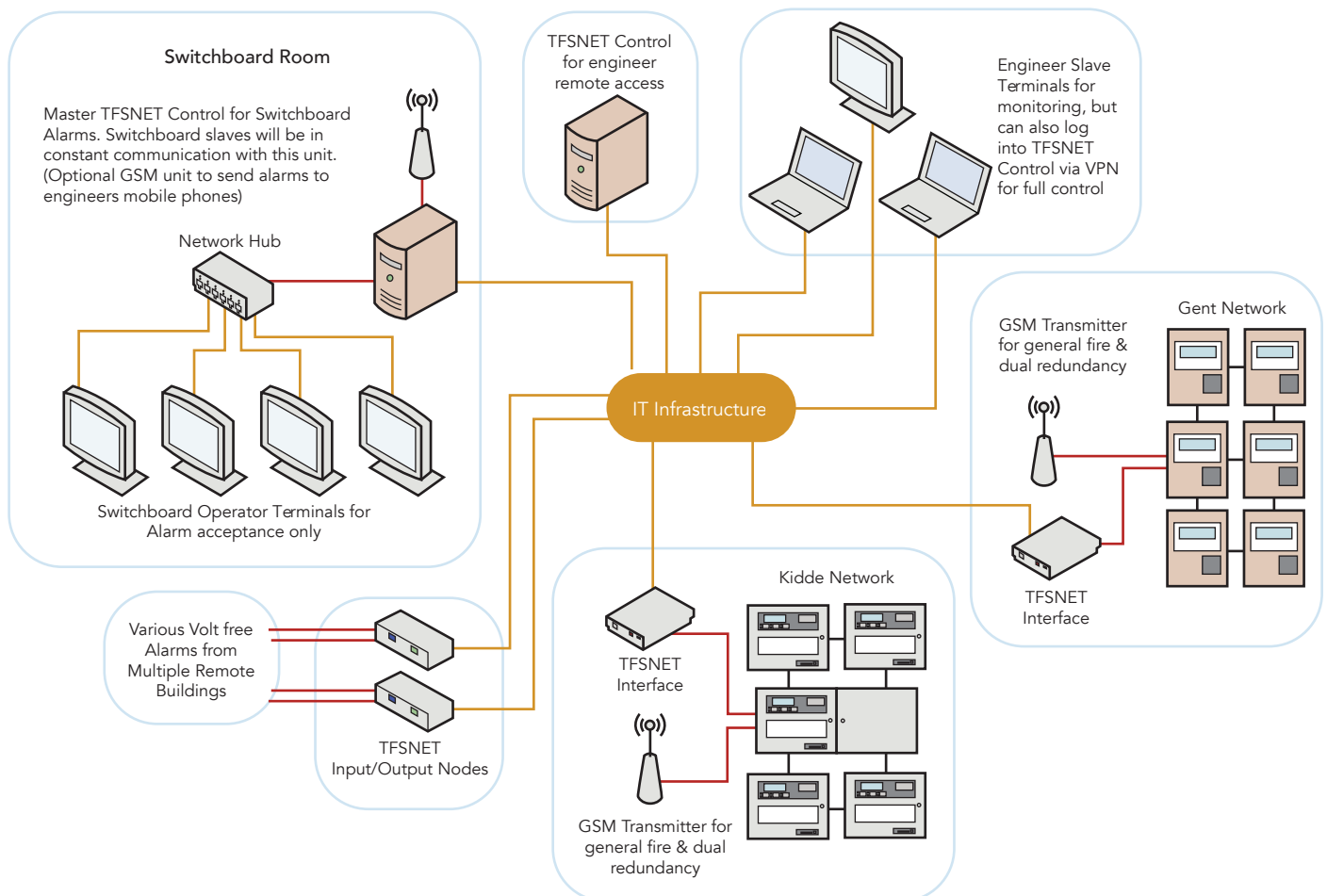
- NHS Hospital Sites
- Chemical Plants
- MOD Sites
- Manufacturing Plants
- Food Processing Plants
- Prisons
- Airports
- Large Shopping Centres

Transmission & Connectivity Methods

- TCP/IP
- WAN / LAN
- RS232
- Internet
- GSM
- RS485

Additional Features

- Monitor Remote Sites (Off Site)
- Reporting of Events and Automated Response
- Expansion of Day Night Controls
- Pager Interface
- Multiple Language
- Multi Tasking with other PC operations



SUPPORTED SYSTEMS

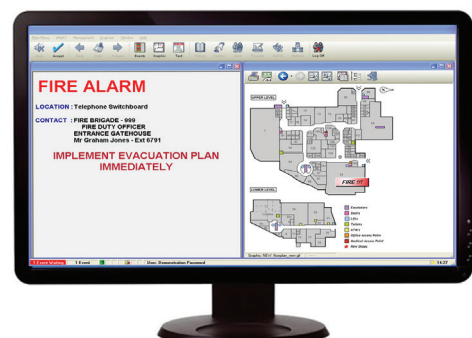
The following systems are just some of the systems supported by TFSNET®. A more detailed list is available upon request.

Fire Systems

- Kidde Vega & Legacy Systems
- Advanced Electronics
- Morley
- Gents
- Ctec
- Protec
- Notifier

Other Critical Systems

- Galaxy Intruder Systems
- Paxton Access Control
- Medical Alarms
- Critical Plant
- CCTV
- Panic Alarms
- HVAC
- Lighting



INTERACTION BETWEEN NETWORKS

An important feature of TFSNET® is that it allows interaction between the different networks that can be connected by the separate network managers. Information received from one manufacturer's system can trigger controls in another manufacturer's system. For example, a fire network could be connected to one network manager and an access control network connected to another. In the event of a fire TFSNET® could unlock all doors in the building using the two networks.



TECHNICAL INFORMATION

GUI HARDWARE minimum requirements
Pentium PC with 256MB memory (512MB or greater preferred) + 40GB hard disk (or greater), running Windows 2000 Professional or Windows XP Professional.

NETWORK MANAGERS
4 (on basic system without additional hardware).

REMOTE NODES
Up to 2047.

ZONES/LOOPS PER NODE
Up to 255.

INPUTS PER ZONE
Up to 255.

STATES PER INPUT
Up to 16.

MAXIMUM TEXT PAGES
2,129,698,800 (theoretical limit). In practice this is limited by the disk space.

MAXIMUM GRAPHICS
Up to 32,000 pages.

HISTORY CAPACITY
Up to 32,000 events/alarms per day. Also 32,000 isolations and 32,000 system events may be stored each day. There is no limit on how long the data may be stored, assuming adequate disk space.

MAXIMUM USERS
Up to 2,000 users may have their own password and user profile defining which modules they may access.

EVENT TYPE CATEGORIES
Up to 32,000 event type categories, e.g. 'Security Alarm' or 'Plant Fault'. Defines how this type of event should be handled by the system.

ALARM PRIORITIES
Up to 32,000. Set up by the event type. CONNECT is a powerful and flexible tool that is consistently being enhanced and improved to meet the challenges in today's alarm management situations. Therefore the data presented here is subject to change as part of that ongoing process.

TFSNET® communicates with the following control panels as standard:

FIRE SYSTEMS

- Kidde Vega
- Advanced MX-4400
- Gent Vigilon
- Morley ZX
- Haes Multi Tech-HS
- Coopers DF4000
- Coopers DF-6000
- Notifier ID3000
- Protec 6300/6400

CCTV

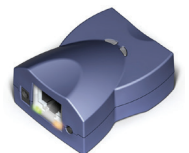
- Pelco Interface

INTRUDER ALARMS

- Galaxy

ACCESS CONTROL

- Paxton



TFSNET Single Panel Interface



TFSNET Multi Panel Interface